

# KARIBAMA

**SIZES :** S\_M\_L\_XL\_XXL\_3XL\_4XL

**COMPOSITION :**

Fabric 1 : 3 layers Softshell (Plain weave/Micropolar fleece)  
Polyester / Elastane 95/5 - 300 .

**WEIGHT :**

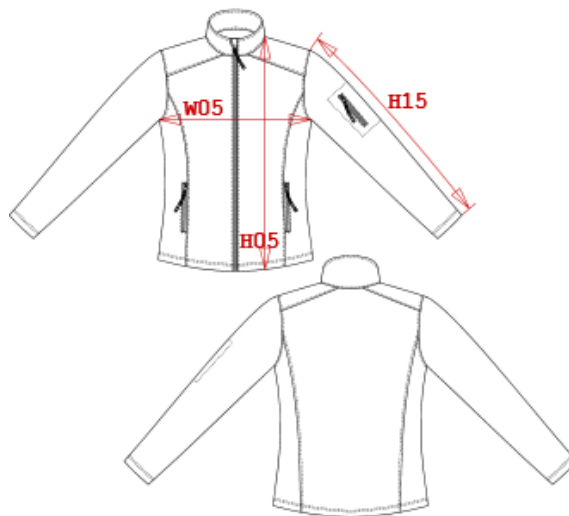
Fabric 1 : 300 gsm

**TECHNICAL DETAIL :**

BR: 3000gsm/24h / WP: 8000mm

**ARTICLE WEIGHT :**

685 gr/pc



DESCRIPTION	
<b>Français :</b>	Veste femme softshell
<b>English :</b>	Ladies soft shell jacket
<b>Nederlands :</b>	Dames soft shell
<b>Deutsch :</b>	Damen soft shell jacke
<b>Español :</b>	Chaqueta softshell para mujer
<b>Italiano :</b>	Giacca donna softshell
<b>Português :</b>	Blusão softshell de senhora

COLORS	PANTONE SERIGRAPHIE
Black	Black
Navy	433C
Red	200C
White	White
Aqua blue	7690C
Titanium	7540C
Marl grey	Based on 877C
Fluorescent yellow	-
Fluorescent orange	-
Chocolate	412C

MEASUREMENT							
Description	S	M	L	XL	XXL	3XL	4XL
<b>H09 (L)</b> Hauteur totale devant / Front total height	63,70	65,70	67,70	69,70	71,70	73,70	75,70
<b>W05 (L)</b> 1/2 largeur poitrine à 1.5cm de l'emmanchure / 1/2 chest width at 1.5cm below armhole	47	50	53	56	59	62	65
<b>H15L (L)</b> Longueur manche longue / Long sleeve length	62,40	63,40	64,40	65,40	66,40	67,40	68,40

CARE LABEL				