

SIZES : XS_S_M_L_XL_XXL_3XL

COMPOSITION :

Main fabric : Polyester oxford PVC coating - 250 100% polyester

Lining 1 : Lining 210T For padded lining body, sleeve and hood 100%polyester

Lining : Polar fleece 300 For inner collar 100%polyester

Padding 1 : Polyfil 165 For padded inner body 100%polyester

Padding 2 : Polyfil 120 For padded inner sleeves and hood 100%polyester

WEIGHT :

Main fabric : 250 gsm

Lining 1 : 60 gsm

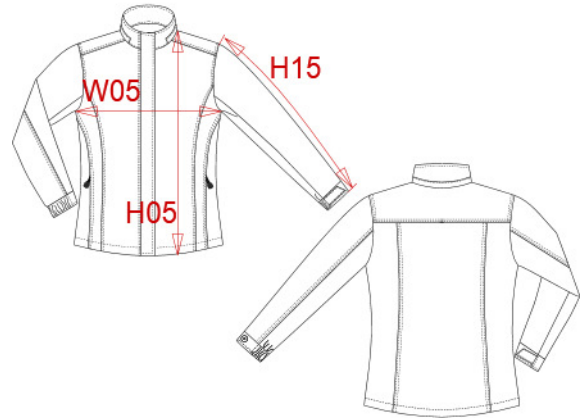
Lining : 300 gsm

Padding 1 : 165 gsm

Padding 2 : 120 gsm

ARTICLE WEIGHT :

900 gr/pc



DESCRIPTION
Français : Parka femme
English : Ladies' parka
Nederlands : Damesparka
Deutsch : Damenparka
Español : Parka para mujer
Italiano : Parka donna
Português : Parka de senhora

COLORS	PANTONE SERIGRAPHIE
Navy	433C
Black	Black
Red	200C

MEASUREMENT							
Description	XS	S	M	L	XL	2XL	3XL
H05 (L) Hauteur totale / Total height	71	73	75	77	79	81	83
W05 1/2 largeur poitrine à 1.5cm de l'emmanchure / 1/2 chest width at 1.5cm below armhole	47	50	53	56	59	62	65
H15 Longueur manche totale / Total sleeve length	62,50	63,50	64,50	65,50	66,50	67,50	68,50

CARE LABEL				