

SIZES : 6/8_8/10_10/12_12/14

COMPOSITION :

Main fabric : Brushed Cotton / Polyester fleece 80/20 - 300
80%cotton / 20%polyester

Lining 1 : Cotton thermal - 215 For hood lining 100%cotton

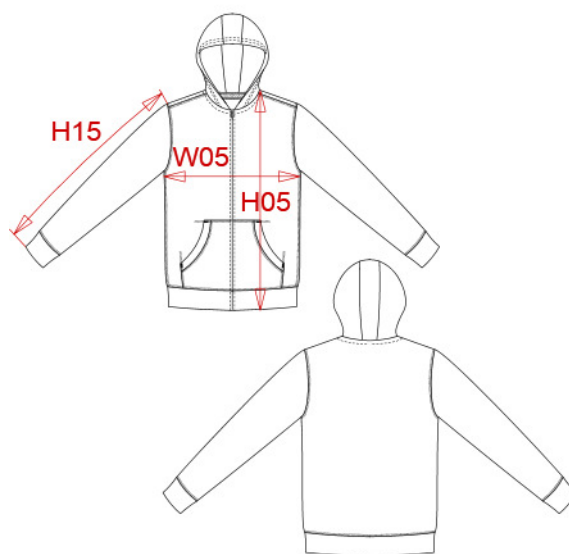
WEIGHT :

Main fabric : 300 gsm

Lining 1 : 215 gsm

ARTICLE WEIGHT :

345 gr/pc



| DESCRIPTION | |
|---------------------|---|
| Français : | Sweat-shirt capuche zippé enfant |
| English : | Kids' full zip hooded sweatshirt |
| Nederlands : | |
| Deutsch : | KAPUZEN JACKE FÜR KINDER |
| Español : | SUDADERA CON CAPUCHA Y CREMALLERA PARA NIÑO |
| Italiano : | FELPA BAMBINO FULL ZIP CON CAPPuccio |
| Português : | Casaco sweatshirt de criança com capuz |

| COLORS | PANTONE SERIGRAPHIE |
|------------------|------------------------|
| White | White |
| Black | Black |
| Navy | 433C |
| Red | 200C |
| Light royal blue | 653C |
| Oxford grey | Based on Cool gray 7C |

| MEASUREMENT | | | | | | |
|--|-------|-------|-------|-------|--|--|
| Description | 6/8 | 8/10 | 10/12 | 12/14 | | |
| H05 (K)* Hauteur totale avec ceinture / Total height waist included | 49,50 | 54,50 | 59,50 | 64,50 | | |
| W05 (K)* 1/2 largeur poitrine / 1/2 chest width | 39 | 42 | 45 | 48 | | |
| H15B (K)* Longueur manche avec poignet / Sleeve length with cuff | 45,50 | 49,50 | 53,50 | 57,50 | | |

| CARE LABEL | | | | |
|------------|--|--|--|--|
| | | | | |