

**SIZES :** 6/8\_8/10\_10/12\_12/14

**COMPOSITION :**

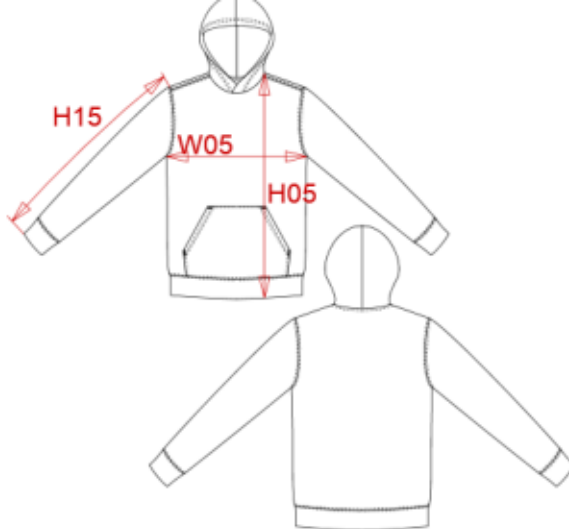
Main fabric : Brushed Combed Cotton / Polyester fleece 80/20 - 280 80% cotton / 20% polyester  
 Fabric 1 : Cotton single jersey (22/1) - 180 For hood lining, neckline property tape. 100% cotton

**WEIGHT :**

Main fabric : 280 gsm  
 Fabric 1 : 180 gsm

**ARTICLE WEIGHT :**

350 gr/pc



DESCRIPTION	
<b>Français :</b> Sweat-shirt capuche contrastée enfant	
<b>English :</b> Kids' contrast hooded sweatshirt	
<b>Nederlands :</b>	
<b>Deutsch :</b> BICOLOR KAPUZEN SWEATSHIRT FÜR KINDER	
<b>Español :</b> SUDADERA CON CAPUCHA CONTRASTADA PARA NIÑO	
<b>Italiano :</b> FELPA BAMBINO CON CAPPuccio IN CONTRASTO	
<b>Português :</b> Sweatshirt de criança com capuz em contraste	

MEASUREMENT						
Description	6/8	8/10	10/12	12/14		
<b>H05</b> Hauteur totale avec BC / Total height with rib	49,50	54,50	59,50	64,50		
<b>W05</b> 1/2 largeur poitrine / 1/2 chest width	39	42	45	48		
<b>H15</b> Longueur manche avec BC / Sleeve length with rib	45,50	49,50	53,50	57,50		

CARE LABEL				

PACKING	
Box	20 pcs / box 6/8 => L:60cm W:40cm H:24cm GW:7.1kg NW:6kg 8/10 => L:60cm W:40cm H:24cm GW:7.8kg NW:6.6kg 10/12 => L:60cm W:40cm H:34cm GW:8.7kg NW:7.3kg 12/14 => L:60cm W:40cm H:34cm GW:9.4kg NW:8kg

COLORS	PANTONE SERIGRAPHIE
Red / White	200C / White
Black / Red	Black / 200C
Light kelly green / White	7482C / White
White / Fine grey	White / 877C
Black / Yellow	Black / 1235C
Light royal blue / Yellow	653C / 1235C
Navy / Fine grey	433C / 877C
Oxford grey / Navy	Based on Cool gray 7C / 433C
Navy / Red	433C / 200C
Black / Fine grey	Black / 877C
Light royal blue / White	653C / White
Fuchsia / Fine grey	7425C / 877C
Sky blue / White	278C / White
Purple / Oxford grey	7447C / Based on Cool gray 7C