

# KARIBAN

**REFERENCE :** K466

**SIZES :** XS\_S\_M\_L\_XL\_XXL\_3XL\_4XL

**COMPOSITION :**

Main fabric : Brushed Combed Cotton / Polyester fleece 80/20 - 280 80%cotton / 20%polyester

Fabric 1 : Cotton single jersey (22/1) - 180 For hood lining and necktape. 100%cotton

**WEIGHT :**

Main fabric : 280 gsm

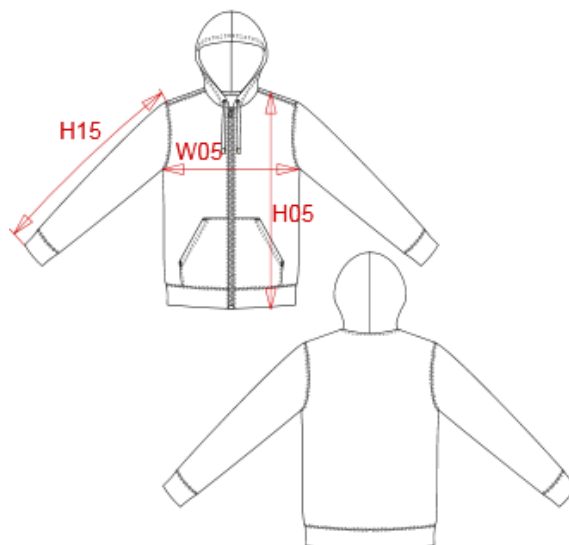
Fabric 1 : 180 gsm

**TECHNICAL DETAIL :**

Regular

**ARTICLE WEIGHT :**

540 gr/pc



DESCRIPTION	
<b>Français :</b>	Sweat-shirt zippé capuche contrastée
<b>English :</b>	Contrast hooded full zip sweatshirt
<b>Nederlands :</b>	Sweater met rits en capuchon in contrasterende kleur
<b>Deutsch :</b>	Sweatshirt mit Reißverschluss und Kapuze in Kontrastfarbe
<b>Español :</b>	Sudadera con capucha y cremallera contrastada
<b>Italiano :</b>	Felpa con cappuccio a contrasto full zip
<b>Português :</b>	Sweatshirt com fecho e capuz em contraste

COLORS	PANTONE SERIGRAPHIE
Black / Fine grey	Black / 877C
Navy / Fine grey	433C / 877C
Black / Red	Black / 200C
Black / Yellow	Black / 1235C
Red / White	200C / White
Oxford grey / Navy	Based on Cool gray 7C / 433C
Dark grey / Black	447C / Black
Navy / Red	433C / 200C
Light royal blue / White	653C / White
Light kelly green / White	7725C / White

MEASUREMENT									
Description	XS	S	M	L	XL	XXL	3XL	4XL	
<b>W05 (M)</b> 1/2 largeur poitrine à 1.5cm de l'emmanchure / 1/2 chest width at 1.5cm below armhole	49	52	55	58	61	64	67	70	
<b>H05 (M)</b> Hauteur totale / Total height	69	71	73	75	77	79	81	83	
<b>H15l (M)</b> Longueur manche avec bord côte / Sleeve length with rib	63	64	65	66	67	68	69	70	

CARE LABEL				

PACKING	
Box	20 pcs / box XS => L:60cm W:40cm H:34cm GW:10.8kg NW:9.2kg S => L:60cm W:40cm H:34cm GW:11.5kg NW:9.9kg M => L:60cm W:40cm H:34cm GW:12.4kg NW:10.8kg L => L:60cm W:40cm H:38cm GW:13kg NW:11.4kg XL => L:60cm W:40cm H:38cm GW:13.7kg NW:12.1kg XXL => L:60cm W:40cm H:38cm GW:14.4kg NW:12.8kg 3XL => L:60cm W:40cm H:40cm GW:15kg NW:13.4kg 4XL => L:60cm W:40cm H:40cm GW:15.5kg NW:13.9kg