

SIZES : S_M_L_XL_XXL_3XL_4XL

COMPOSITION :

Fabric 1 : 3 layers Softshell (Plain weave/Micropolar fleece)
Polyester / Elastane 95/5 - 300 .

WEIGHT :

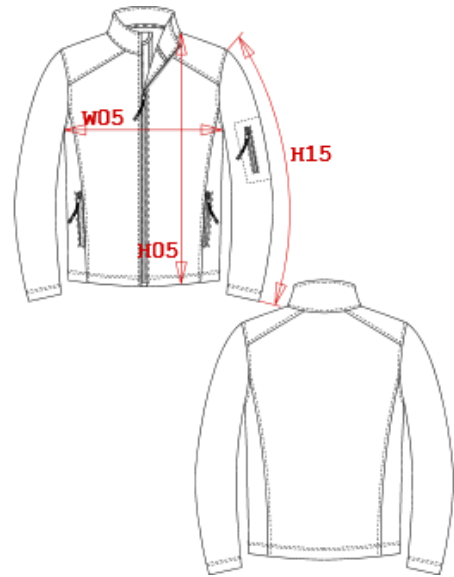
Fabric 1 : 300 gsm

TECHNICAL DETAIL :

BR: 3000gsm/24h / WP: 8000mm

ARTICLE WEIGHT :

712 gr/pc



DESCRIPTION	
Français : Veste homme softshell	
English : Mens soft shell jacket	
Nederlands : Heren soft shell	
Deutsch : Herren soft shell jacke	
Español : Chaqueta softshell para hombre	
Italiano : Giubbotto uomo softshell	
Português : Blusão softshell de homem	

COLORS	PANTONE SERIGRAPHIE
Black	Black
Navy	433C
Red	200C
White	White
Aqua blue	7690C
Titanium	7540C
Marl grey	Based on 877C
Fluorescent yellow	-
Fluorescent orange	-
Chocolate	412C

MEASUREMENT							
Description	S	M	L	XL	XXL	3XL	4XL
H09 (M) Hauteur totale devant / Front total height	72,20	74,20	76,20	78,20	80,20	82,20	84,20
W05 (M) 1/2 largeur poitrine à 1.5cm de l'emmanchure / 1/2 chest width at 1.5cm below armhole	52	55	58	61	64	67	70
H15L (M) Longueur manche longue / Long sleeve length	65	66,50	68	69,50	71	72,50	74

CARE LABEL				