

SIZES : S_M_L_XL_XXL_3XL_4XL

COMPOSITION :

Main fabric : 3 layers Softshell (Plain weave/Micropolar fleece)
Polyester / Elastane 95/5 - 340 .

Mesh : Polyester mesh - 100 For front middle lining
Low elasticity mesh 100%polyester

WEIGHT :

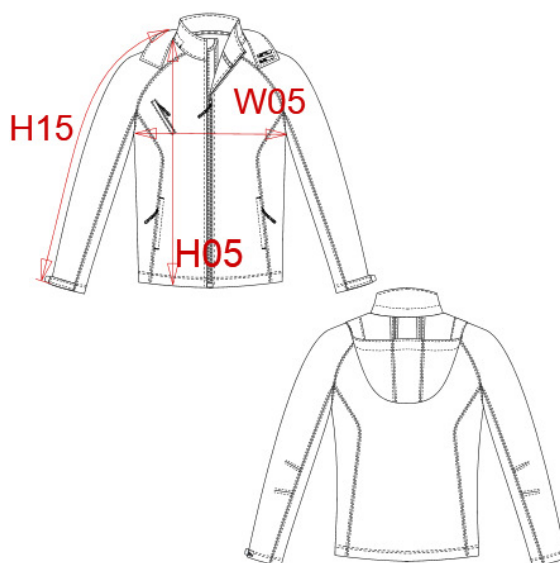
Main fabric : 340 gsm
Mesh : 100 gsm

TECHNICAL DETAIL :

3 layers bonded (Outer: Woven plain weave/Performance
membrane/Inner: Anti pilling micropolar fleece) BR:
1000g/m2/24h / WP5000

ARTICLE WEIGHT :

900 gr/pc



DESCRIPTION	
Français :	Veste softshell à capuche homme
English :	Men's hooded softshell jacket
Nederlands :	
Deutsch :	HERREN SOFTSHELL JACKE MIT KAPUZE
Español :	CHAQUETA SOFTSHELL CON CAPUCHA
Italiano :	GIACCA SOFTSHELL CON CAPPuccio DA UOMO
Português :	Blusão Softshell com capuz

COLORS	PANTONE SERIGRAPHIE
Black	Black
Navy	433C
Red	200C
Titanium	7540C

MEASUREMENT							
Description	S	M	L	XL	XXL	3XL	4XL
H05 (M) Hauteur totale / Total height	72,50	74,50	76,50	78,50	80,50	82,50	84,50
W05 (M) 1/2 largeur poitrine / 1/2 chest width	52	55	58	61	64	67	70
H15L (M) Longueur manche longue / Long sleeve length	78,75	81,25	83,75	86,25	88,75	91,25	93,75

CARE LABEL				

SIZES : S_M_L_XL_XXL_3XL_4XL

COMPOSITION :

Main fabric : 3 layers Softshell (Plain weave/Micropolar fleece)
Polyester / Elastane 95/5 - 340 .

Mesh : Polyester mesh - 100 For front middle lining

Low elasticity mesh 100%polyester

WEIGHT :

Main fabric : 340 gsm

Mesh : 100 gsm

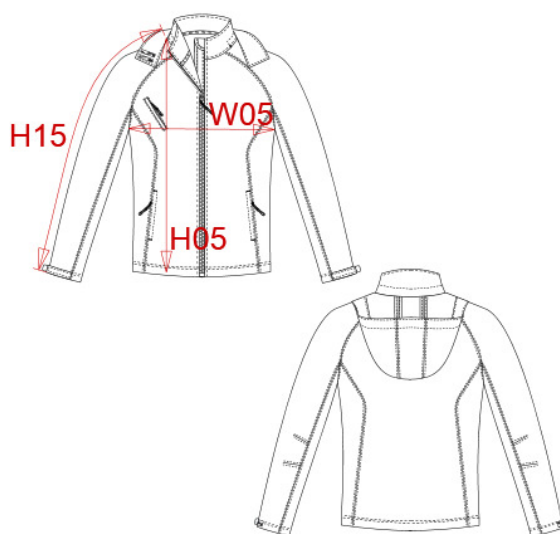
TECHNICAL DETAIL :

3 layers bonded (Outer: Woven plain weave/Performance membrane/Inner: Anti pilling micropolar fleece) BR:

1000g/m2/24h / WP5000

ARTICLE WEIGHT :

625 gr/pc



DESCRIPTION	
Français : Veste softshell à capuche femme	
English : Ladies' hooded softshell jacket	
Nederlands :	
Deutsch : DAMEN SOFTSHELL JACKE MIT KAPUZE	
Español : Chaqueta softshell con capucha para mujer	
Italiano : GIACCA SOFTSHELL CON CAPPuccio DA DONNA	
Português : Blusão Softshell de senhora com capuz	

COLORS	PANTONE SERIGRAPHIE
Black	Black
Navy	433C
Red	200C
Titanium	7540C

MEASUREMENT							
Description	S	M	L	XL	XXL	3XL	4XL
H09 (L) Hauteur totale devant / Front total height	63,20	65,20	67,20	69,20	71,20	73,20	75,20
W05 (L) 1/2 largeur poitrine à 1.5cm de l'emmanchure / 1/2 chest width at 1.5cm below armhole	47	50	53	56	59	62	65
H15L (L) Longueur manche longue / Long sleeve length	72,50	74	75,50	77	78,50	80	81,50

CARE LABEL				